

PC4700 SERIES FUSING SYSTEMS

The PC4700 series fusing systems were designed to reflow double sided and low mass multilayer circuit boards. The system of one temperature controlled long wave IR emitting zone for a saturating preheat and one short wave IR emitting zone with independent upper/lower lamp control. This patented fusing technique provides a wider process window than all lamp systems. The preheat and reflow zone emitters are selected specifically for the preheat and reflow purposes respectively.

The control system provides highly accurate temperature and lamp power control. Temperature control is within 2 degrees Celsius. Lamp power control is within 1% of full power. Conveyor speed is controlled to within 1% of full speed.

AVAILABLE OPTIONS

24" EXIT EXTENSION: Provides an additional 24" of exit conveyor on the exit of the fuser. This option is particularly useful for removing or visually inspecting parts prior to postcleaning.

CONVEYOR STOP ALARM: Provides an alarm and interlock system to disable all heat sources in the event of conveyor stoppage.

REMOTE CONTROL CONSOLE: Provides a separate NEMA rated console for the system controls a distance of up to 10 feet away from the machine.

CUSTOM CONVEYOR HEIGHT: Argus' standard equipment conveyor height is adjustable between 42-44 inches. Custom heights are available with this option.

ELECTRICAL SERVICE REQUIREMENTS

Circuit Breaker service is 3-phase configuration with a good Ground.

ITEM	200-240V 50/60HZ	380-415V 50HZ	440-480V 50/60HZ	POWER
PC4720 CIRCUIT BREAKER	100A	70A	70A	35kVA
PC4730 CIRCUIT BREAKER	150A	100A	100A	53kVA

Notes: PC4700 has a main exhaust blower that should be supplied separately for safety reasons. Blower will be supplied by Argus at the same supply voltage as the machine.

EXHAUST SYSTEM REQUIREMENTS

MAIN EXHAUST

ITEM	VOLUME	TRANSITION ADAPTER	BLOWER POWER	DUCTING
PC4720	1500CFM	11.87" x 8.06" Rectangular to 10" Diameter	3/4HP	10" Galvanized
PC4730	2500CFM	13.25" x 9.75" Rectangular to 12" Diameter	1 1/2HP	12" Galvanized

Note: Transition and ducting to be supplied by user.

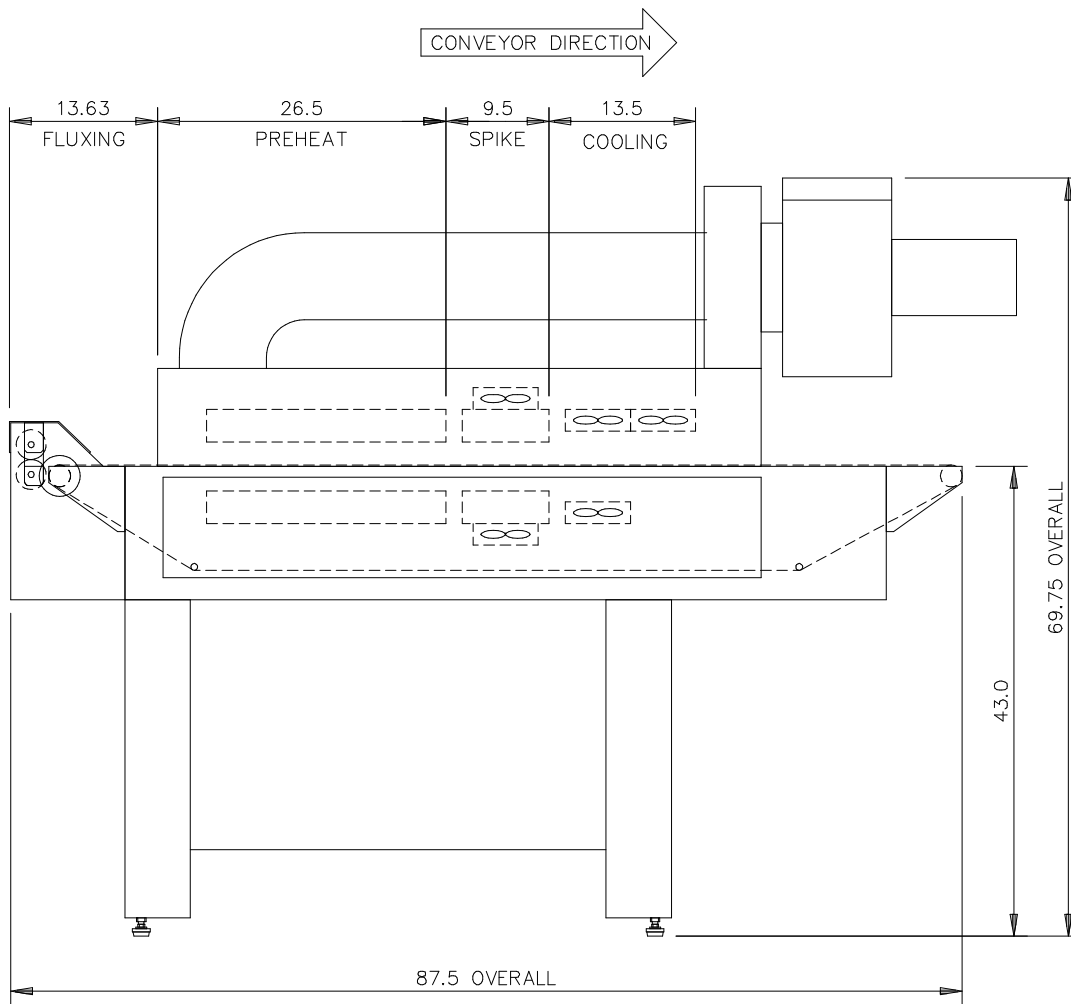
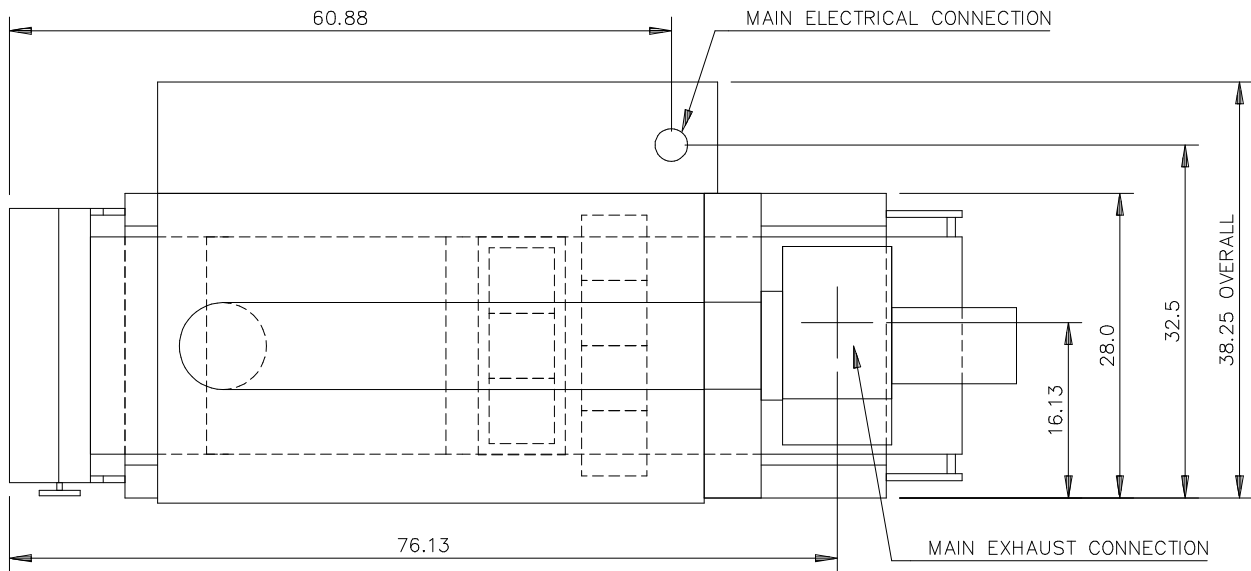
SHIPPING DATA

ITEM	CRATE SIZE	AIR FREIGHT CRATED WEIGHT	COMMON CARRIER CRATED WEIGHT
PC4720	102" x 49" x 65"	1,000 lbs.	1,400 lbs.
PC4730	102" x 63" x 65"	1,200 lbs.	1,650 lbs.

Note: Crating dimensions and weights are approximate and may vary within 10%.

PC4700 SERIES FUSING SYSTEMS

PC4720 Physical Dimensions



PC4700 SERIES FUSING SYSTEMS

PC4730 Physical Dimensions

