

PC3800 SERIES FLUX APPLICATION SYSTEMS

The PC3800 series flux application systems are designed to support the HAL5224 and HAL5124 Hot Air Solder Leveling system by applying flux to circuit boards prior to the HASL process. The PC3800 employs three sets of nappy type rollers to provide complete flux coverage while minimizing flux usage. The first roller applies flux to the entire board surface. The second roller forces flux into the barrels and removes excess flux from the board surface. The third roller serves as a squeegee to remove all excess flux coverage. Excess flux is filtered and recycled providing a significant cost savings.

The PC3800 has an optional mini-accumulator that enables the operator to make minor system adjustments without stopping production. The PC3800 also has an optional 24 inch entrance extension to ease board loading when precleaning is not in-line. Similar Argus products include PC3400 and PC3600 flux application systems.

AVAILABLE OPTIONS

ACCUMULATOR: Provides a board accumulation system at machine exit to allow HASL system operator time to make minor machine adjustments without stopping production.

ENTRANCE EXTENSION: Adds a 24 inches of entrance conveyor to ease board loading when precleaning is not in-line.

ELECTRICAL SERVICE REQUIREMENTS

Circuit Breaker service is 1-phase configuration with a good Ground.

ITEM	120V 50/60HZ	240V 50/60HZ	POWER
PC3820 CIRCUIT BREAKER	5 Amp	3 Amp	.5kVA
PC3830 CIRCUIT BREAKER	5 Amp	3 Amp	.5kVA

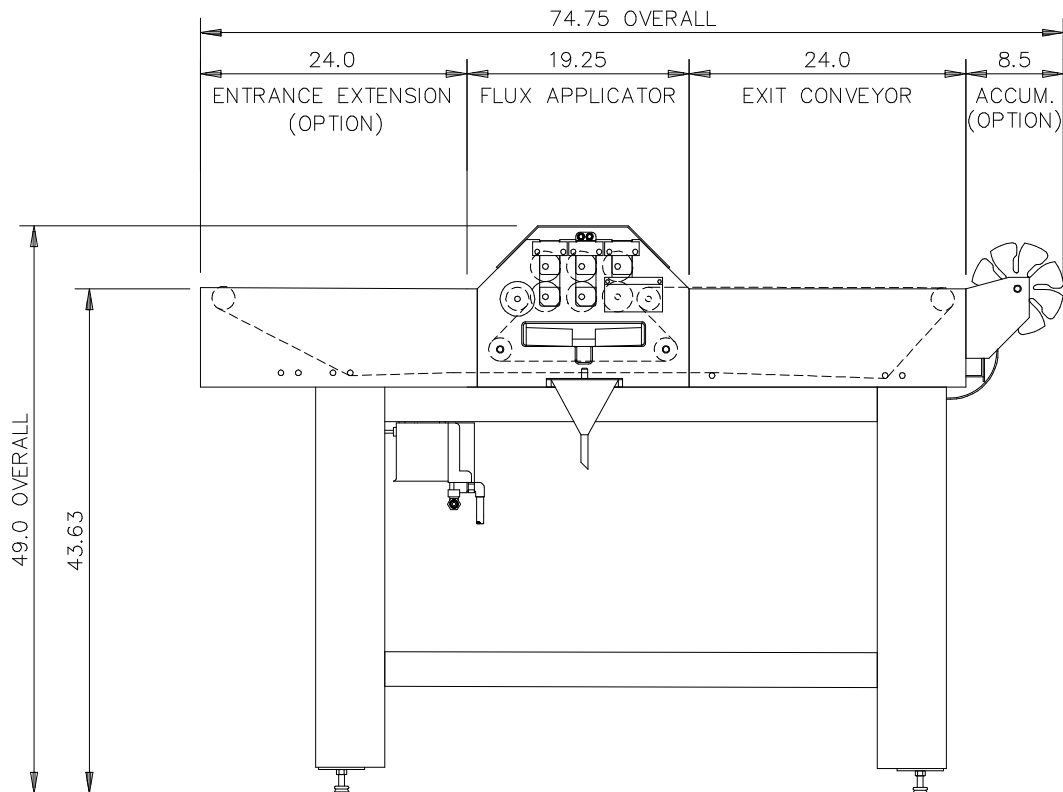
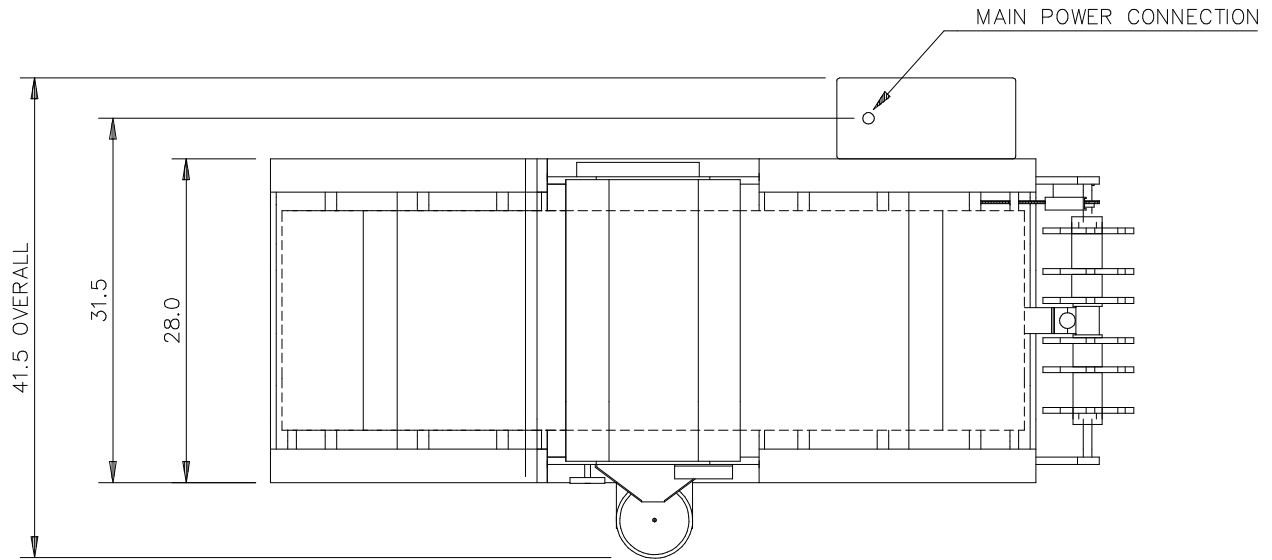
SHIPPING DATA

ITEM	CRATE SIZE	AIR FREIGHT CRATED WEIGHT	COMMON CARRIER CRATED WEIGHT
PC3820	102" x 49" x 65"	450 lbs.	850 lbs.
PC3830	102" x 63" x 65"	500 lbs.	900 lbs.

Note: Crating dimensions and weights are approximate and may vary within 10%.

PC3800 SERIES FLUX APPLICATION SYSTEMS

PC3820 Physical Dimensions



PC3800 SERIES FLUX APPLICATION SYSTEMS

PC3830 Physical Dimensions

