

# PC3400 SERIES FLUX APPLICATION SYSTEMS

---

The PC3400 series flux application systems are designed to support the HAL5124 Hot Air Solder Leveling system by applying flux to circuit boards prior to the HASL process. The PC3400 employs a set of nappy type rollers to provide complete flux coverage. The first roller applies flux to the entire board surface. The second roller forces flux into the barrels providing complete surface coverage. Excess flux is filtered and recycled proving a significant cost savings.

The PC3400 includes a preheat stage which allows the panel to enter the HASL system warm, this reduces the heat loading in the solder pot and can make some fluxes more active. Preheating of high-mass circuit boards enables increased HASL production by minimizing solder pot dwell times.

## ELECTRICAL SERVICE REQUIREMENTS

**Circuit Breaker service is 2-phase configuration with a good Ground.**

ITEM	200-240V 50/60HZ	380-415V 50HZ	440-480V 50/60HZ	POWER
PC3420 CIRCUIT BREAKER	70A	50A	50A	16kVA
PC3430 CIRCUIT BREAKER	100A	70A	70A	24kVA

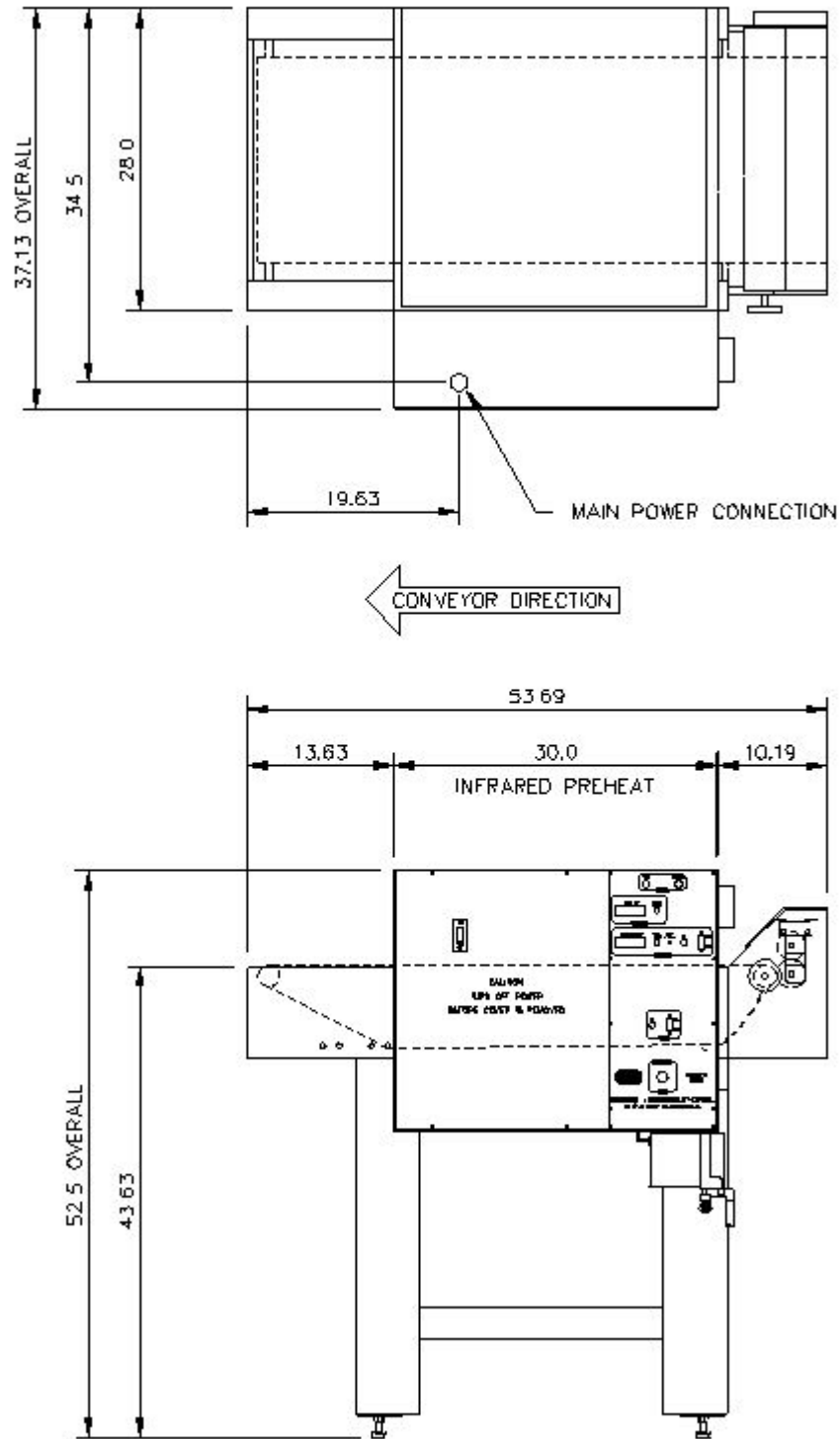
## SHIPPING DATA

ITEM	CRATE SIZE	AIR FREIGHT CRATED WEIGHT	COMMON CARRIER CRATED WEIGHT
PC3420	66" x 63" x 66"	800 lbs.	1200 lbs.
PC3430	66" x 63" x 66"	850 lbs.	1250 lbs.

**Note:** Crating dimensions and weights are approximate and may vary within 10%.

# PC3400 SERIES FLUX APPLICATION SYSTEMS

## PC3420 Physical Dimensions



# PC3400 SERIES FLUX APPLICATION SYSTEMS

## PC3430 Physical Dimensions

